

GRADING CONSTRUCTION NOTES

- 1 CONSTRUCT 9-INCH PCC PAVEMENT OVER 12-INCH OF CLASS 2 AGGREGATE BASE COMPACTED 95% RELATIVE COMPACTION.
- 2 CONSTRUCT 12-INCH PCC PAVEMENT OVER 12-INCH OF CLASS 2 AGGREGATE BASE COMPACTED 95% RELATIVE COMPACTION, SEE SHEET C-2.
- 3 CONSTRUCT 6" PCC CURB PER RIVERSIDE COUNTY STD 204.
- 4 CONSTRUCT 6" PCC CURB AND GUTTER PER RIVERSIDE COUNTY STD 200.
- 5 CONSTRUCT 4" THICK PCC SIDEWALK OVER COMPACTED SUBGRADE PER RIVERSIDE COUNTY STD 400.
- 6 CONSTRUCT COMMERCIAL DRIVEWAY APPROACH PER RIVERSIDE COUNTY STD 207A (MODIFIED PER PLANS).
- 7 CONSTRUCT 4" WHITE LINE THERMOPLASTIC PARKING STRIPING PER ARCHITECT SPECIFICATIONS.
- 8 CONSTRUCT ADA PARKING STALL PER DETAIL "A" ON SHEET C-2.
- 9 CONSTRUCT CONCRETE WHEEL STOP PER DETAIL "B" ON SHEET C-2.
- 10 CONSTRUCT 3-FOOT CROSS GUTTER PER DETAIL "C" ON SHEET C-2.
- 11 INSTALL YELLOW DETECTABLE WARNING MAT PER DETAIL "D" ON SHEET C-2.
- 12 INSTALL PSI PACIFIC SOUTHWEST PUMP SYSTEM PER DETAIL ON SHEET C-3, OR APPROVED EQUAL.
- 13 CONSTRUCT CURB RAMP PER RIVERSIDE COUNTY STD 403, CASE C.
- 14 CONSTRUCT CURB RAMP PER RIVERSIDE COUNTY STD 403, CASE A.
- 15 CONSTRUCT CMU WALL PER ARCHITECTURAL PLAN, SEE DETAIL 1 ON SHEET A1.5.
- 16 CONSTRUCT 0.30' THICK AC OVER 6" OF CLASS 2 AGGREGATE BASE MATERIAL.
- 17 CONSTRUCT ABOVE GROUND FUEL TANK, GENERATOR, CONCRETE CONTAINMENT POND, SHADE CANOPY, AND PIPE BOLLARDS PER ARCHITECTURAL PLAN, SEE DETAIL 12 ON SHEET A1.2.
- 18 CONSTRUCT TRASH ENCLOSURE PER ARCHITECTURAL PLAN, SEE DETAIL 2 ON SHEET A1.2.
- 19 CONSTRUCT CANOPY PER ARCHITECTURAL PLAN, SEE SHEET A1.6.
- 20 CONSTRUCT MOTORIZED GATE KEYPAD ON PEDESTAL AND PIPE BOLLARDS PER ARCHITECTURAL PLAN, SEE DETAIL 12 ON SHEET A1.3. FIRE DEPARTMENT KNOX KEY SWITCH REQUIRED AT KEYPAD PEDESTAL CONTROL BOX.
- 21 CONSTRUCT ORNAMENTAL MOTORIZED ROLLING GATE AND COMPONENTS PER ARCHITECTURAL PLAN, SEE DETAIL 5 ON SHEET A1.3.
- 22 INSTALL 4'X12' ES48E ECOSTREAM BIOFILTER SOLID LID PER DETAIL ON SHEET C-2 AND WQMP REPORT, OR APPROVED EQUAL.
- 23 CONSTRUCT LPG TANK, CONCRETE PAD, AND PIPE BOLLARDS PER ARCHITECTURAL PLAN, SEE DETAIL 5 ON SHEET A1.1.
- 24 CONSTRUCT 5-INCH PCC PAVEMENT OVER 6-INCH OF CLASS 2 AGGREGATE BASE COMPACTED 95% RELATIVE COMPACTION.
- 25 CONSTRUCT CURB RAMP PER RIVERSIDE COUNTY STD 403, CASE D, MODIFIED PER PLANS.
- 26 CONSTRUCT UNDER SIDEWALK DRAIN PER RIVERSIDE COUNTY STD 309. W=3'.
- 27 CONSTRUCT SHOTCRETE V-DITCH W=8' PER DETAIL "E" ON SHEET C-2.
- 28 INSTALL ADS MC-3500 STORMTECH CHAMBER PER PLANS AND SEPARATE ADS CHAMBERS DESIGN DOCUMENTS PER DETAIL ON SHEET C-3 AND WQMP REPORT, OR APPROVED EQUAL.

STROM DRAIN NOTES

- A INSTALL 24"x24" JENSEN PRECAST DROP INLET BASIN MODEL 2424 WITH GRATE, OR APPROVED EQUAL.
- B INSTALL 6" ROUND GRATE COVER PER DETAIL "G" ON SHEET C-2.
- C INSTALL 4" HDPE PIPE OR APPROVED EQUAL.
- D INSTALL 6" HDPE PIPE OR APPROVED EQUAL.
- E INSTALL 9" HDPE PIPE OR APPROVED EQUAL.
- F INSTALL 12" HDPE PIPE OR APPROVED EQUAL.
- G INSTALL 18" HDPE PIPE OR APPROVED EQUAL.
- H 6" CLEAN OUT.
- J 9X12 HDPE INCREASER.
- K 12X18 HDPE INCREASER.
- L 12X12X12 HDPE TEE.
- M 12X12X12X12 HDPE CROSS.

EROSION CONTROL NOTES

- 1 STABILIZED CONSTRUCTION ENTRANCE (TC-1)
- 2 SILT FENCE (SE-1)
- 3 FIBER ROLLS (SE-5)
- 4 GRAVEL BAG BERM (SE-6)
- 5 STREET SWEEPING AND VACUUMING (SE-7)
- 6 STORM DRAIN INLET PROTECTION (SE-10)
- 7 MATERIAL DELIVERY AND STORAGE (WM-1)
- 8 STOCKPILE MANAGEMENT (WM-3)
- 9 SPILL PREVENTION AND CONTROL (WM-4)
- 10 SOLID WASTE MANAGEMENT (WM-5)
- 11 CONCRETE WASTE MANAGEMENT (WM-8)
- 12 VEHICLE AND EQUIPMENT FUELING (NS-9)
- 13 VEHICLE AND EQUIPMENT MAINTENANCE (NS-10)

UTILITY PLAN NOTES

WATER CONSTRUCTION NOTES:

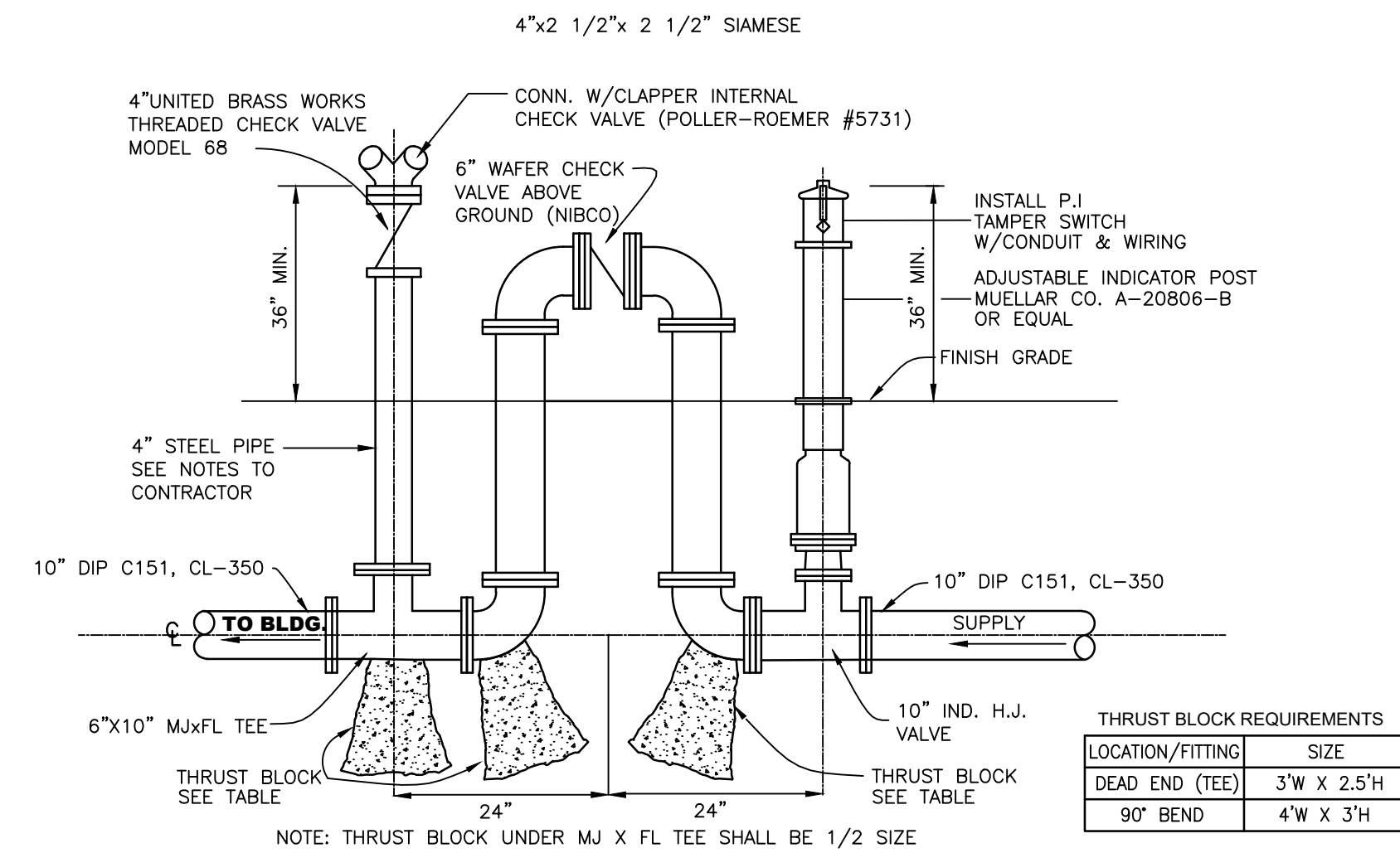
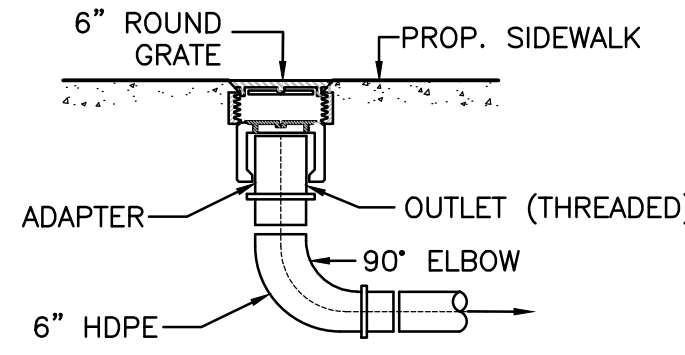
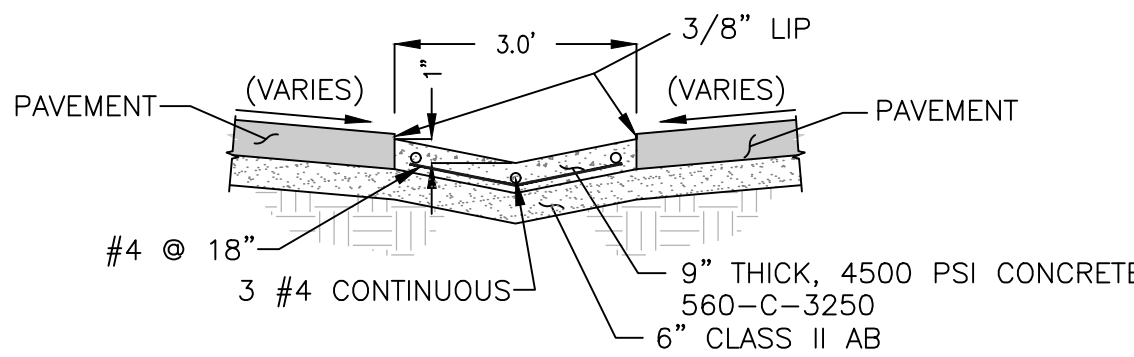
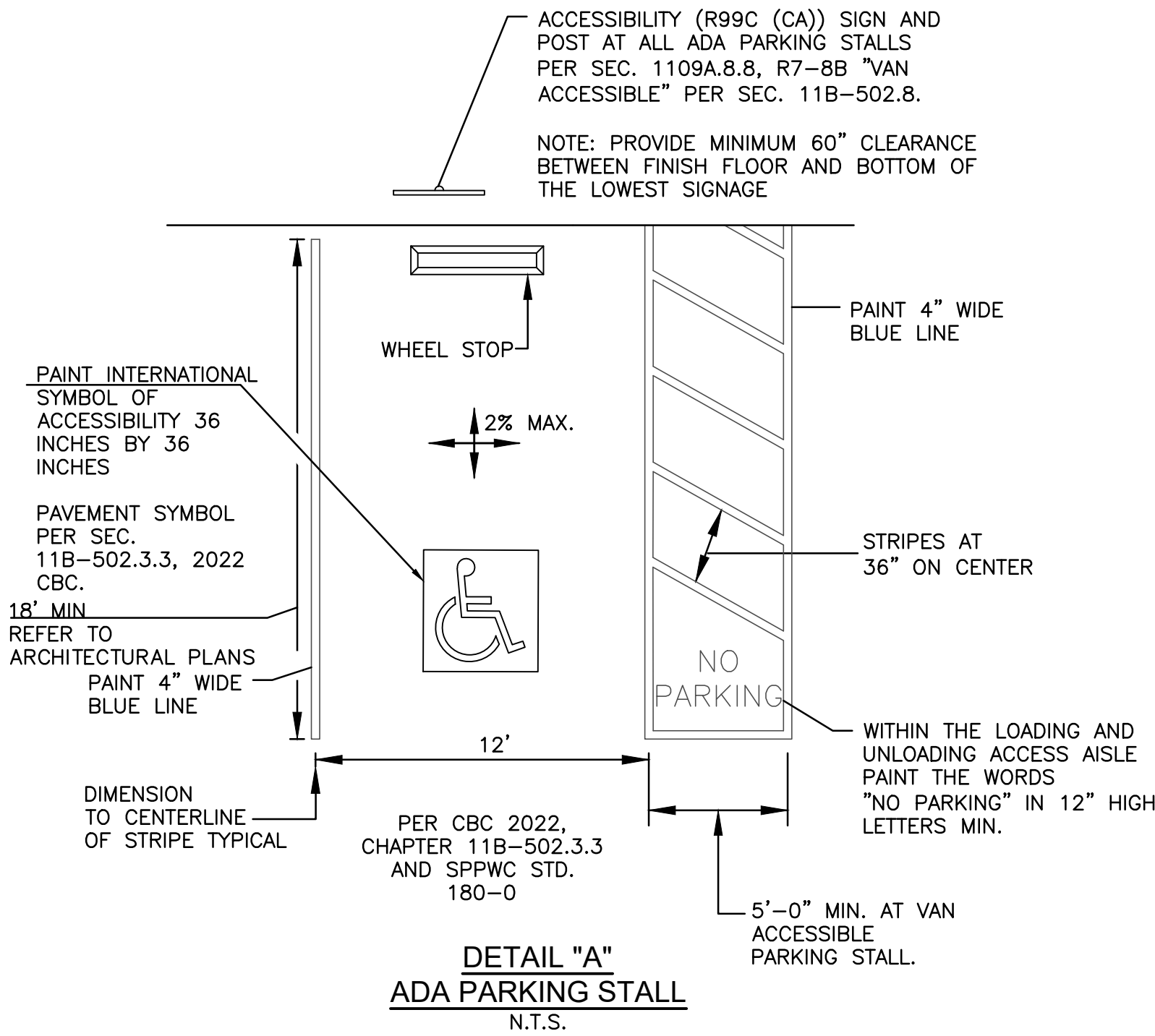
- 1 INSTALL 2-INCH WATER SERVICE CONNECTION AND METER PER EMWD STD DWG B-344A.
- 2 INSTALL 1-INCH WATER IRRIGATION SERVICE CONNECTION AND METER PER EMWD STD DWG B-590A.
- 3 INSTALL 2-INCH REDUCED PRESSURE BACKFLOW PREVENTER PER EMWD STD DWG B-597A.
- 4 INSTALL 1-INCH REDUCED PRESSURE BACKFLOW PREVENTER PER EMWD STD DWG B-597A.
- 5 INSTALL 2-INCH 45° ELBOW.
- 6 INSTALL 2-INCH PVC, SCHEDULE 40 OR APPROVED EQUAL.
- 7 CONNECT MANIFOLD PER EMWD MANIFOLD STANDARD DETAIL ON SHEET C-2.

SEWER CONSTRUCTION NOTES:

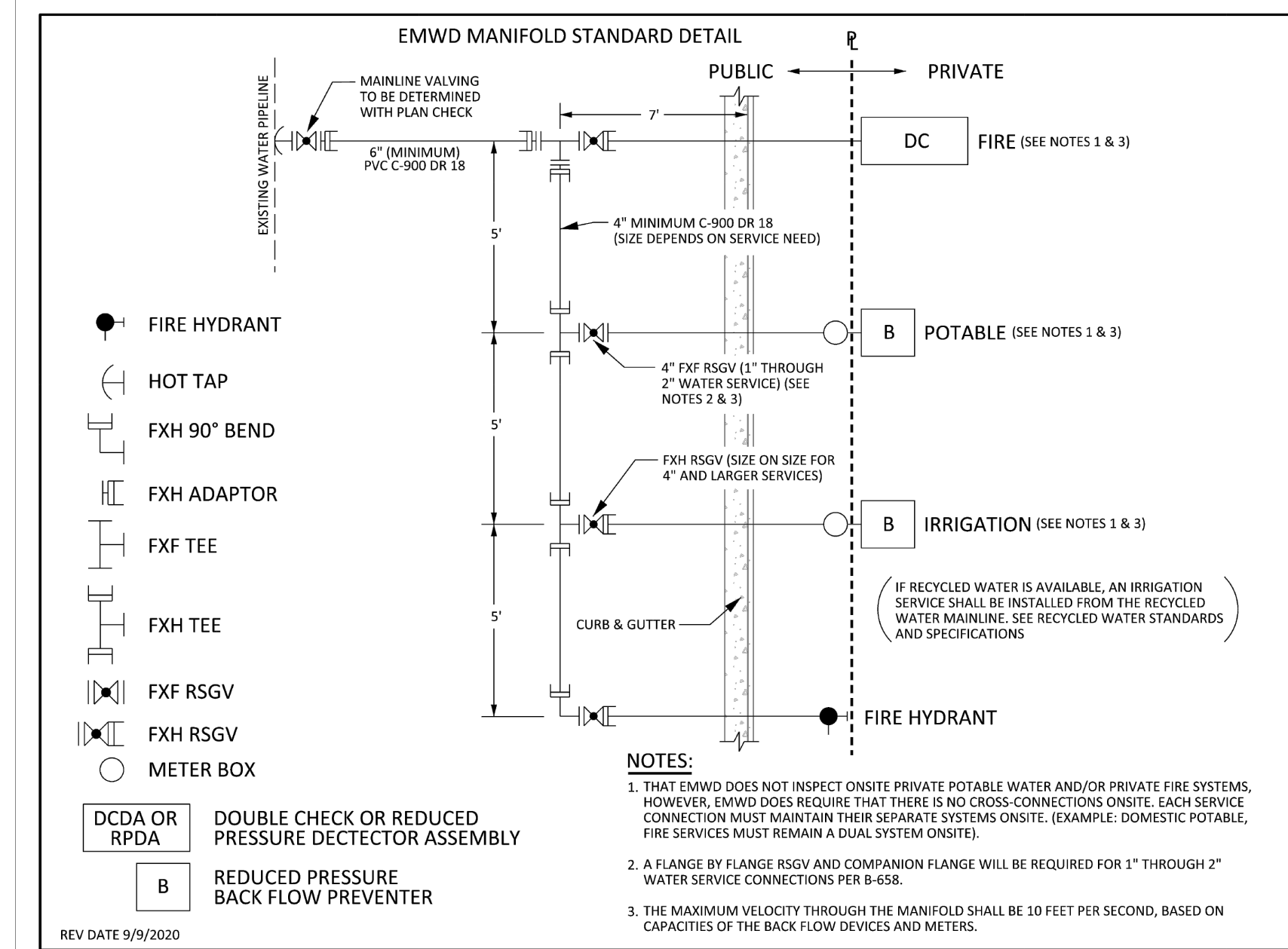
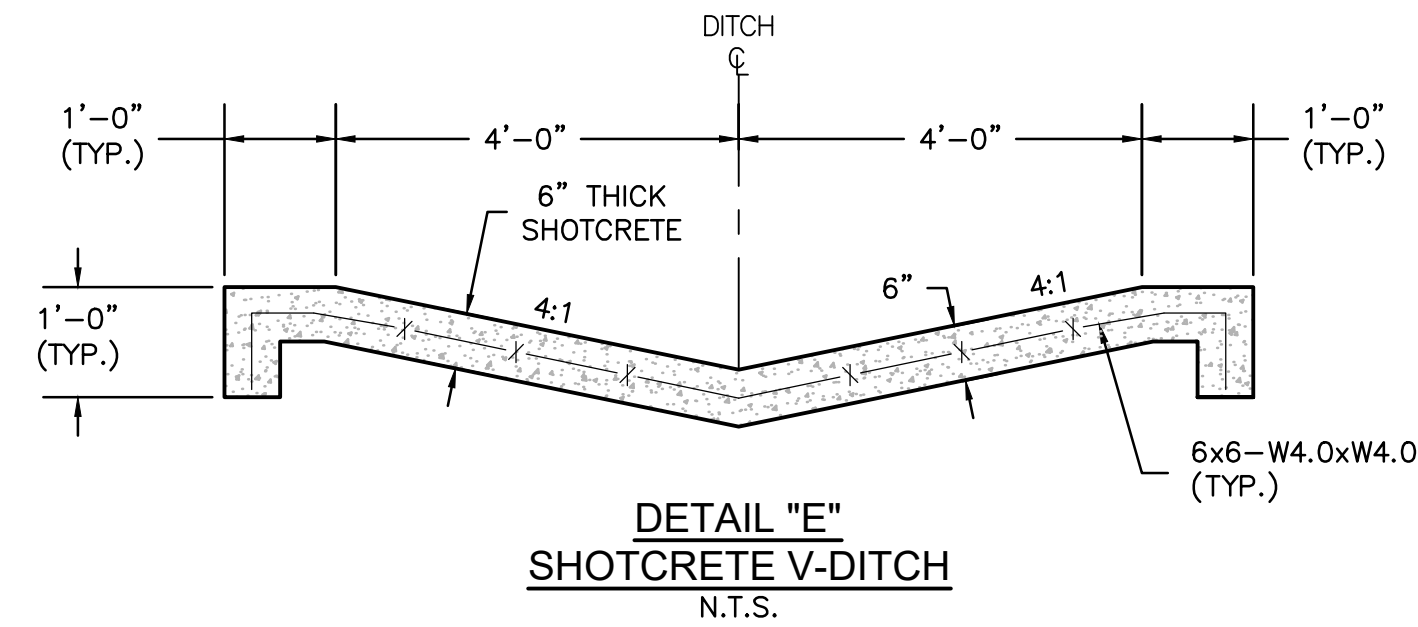
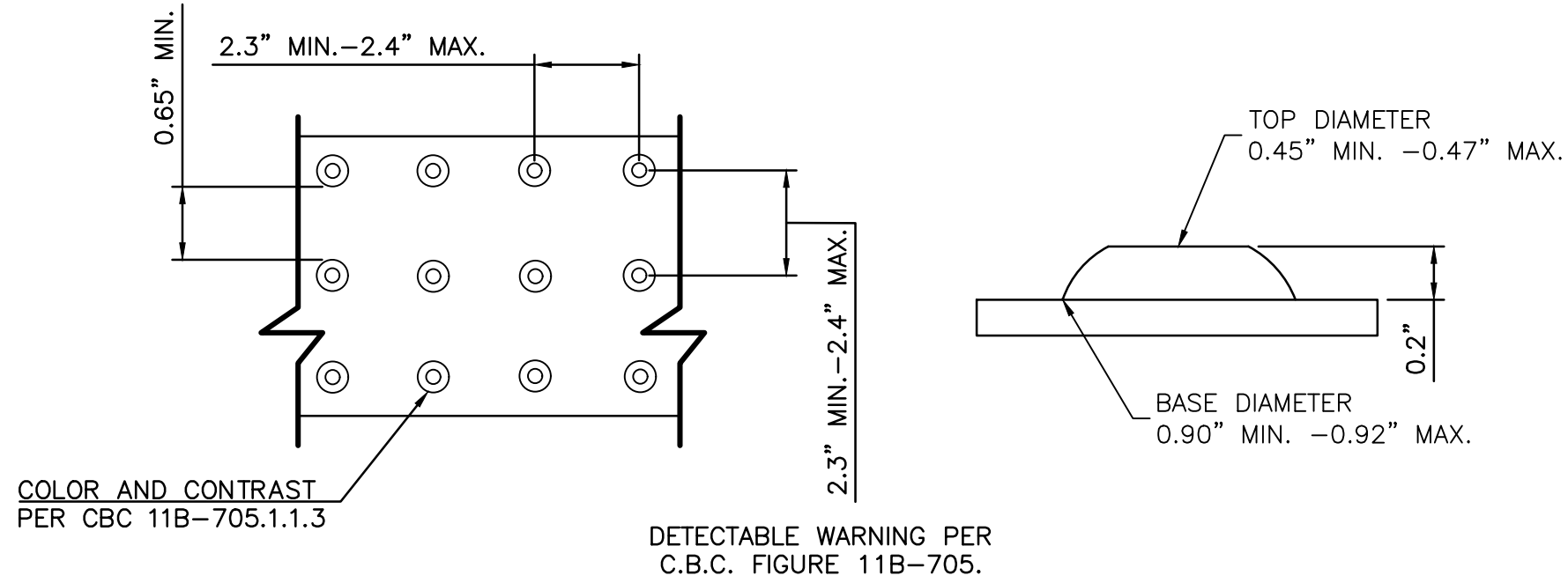
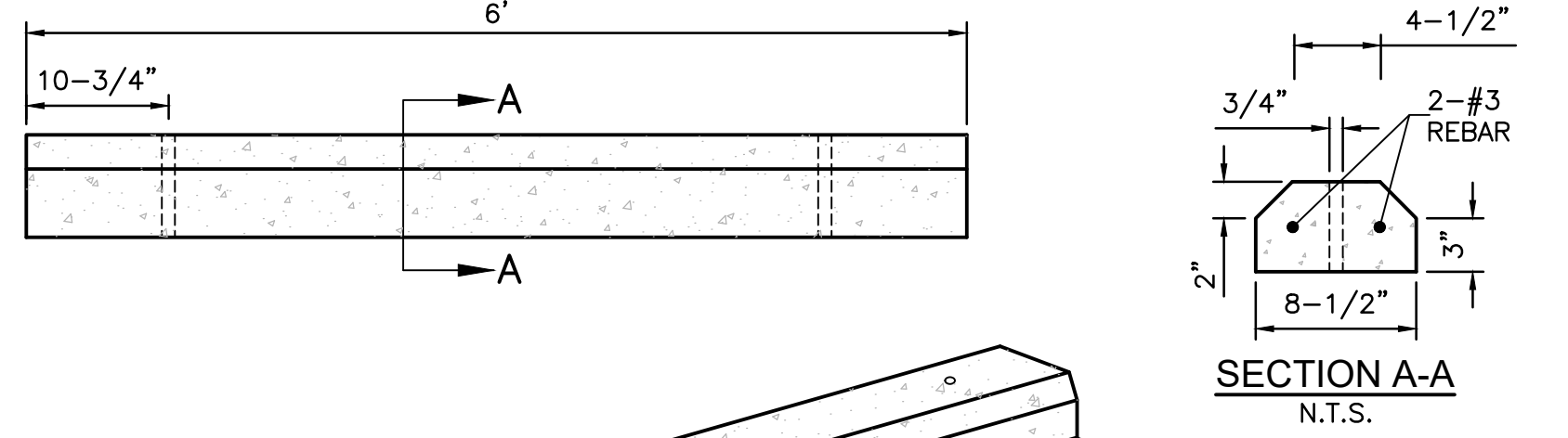
- 1 INSTALL GREASE INTERCEPTOR PER SEPTIC SYSTEM PLAN, SEE SHEET D-1.
- 2 INSTALL 4-INCH SCHEDULE 40 PVC OR APPROVED EQUAL.
- 3 INSTALL 4-INCH SEWER CLEANOUT PER SEPTIC SYSTEM PLAN, SEE SHEET D-1.

FIRE PROTECTION CONSTRUCTION NOTES:

- 1 INSTALL 10-INCH FIRE DOUBLE CHECK DETECTOR ASSEMBLY PER EMWD STD DWG B-657.
- 2 INSTALL POST INDICATOR AND FIRE DEPARTMENT CONNECTION VALVE PER DETAIL "H" ON SHEET C-2.
- 3 INSTALL 10-INCH PVC C900 OR APPROVED EQUAL.
- 4 INSTALL 6-INCH PVC C900 OR APPROVED EQUAL.
- 5 INSTALL 6-INCH DIA. FIRE HYDRANT PER EMWD STD DWG B-517.
- 6 INSTALL 6-INCH 45° ELBOW.
- 7 INSTALL 10-INCH 45° ELBOW.
- 8 INSTALL 10X6-INCH TEE.
- 9 INSTALL 10"x6" REDUCER.
- 10 CONNECT FIRE LINE PER DETAIL "J" ON SHEET C-6 AND C-7.
- 11 CONSTRUCT 3'X3 CONCRETE PAD PER EMWD STD DWG B-517.
- 12 INSTALL 10-INCH 90° ELBOW.
- 13 INSTALL 6-INCH 90° ELBOW.



DETAIL "H" - POST INDICATOR FIRE DEPARTMENT CONNECTION N.T.S.



DATE	BY	MARK	REVISIONS	APPR.	DATE
	ENGINEER				CITY
DESIGNED BY:	DRAWN BY:	CHECKED BY:			

PREPARED BY:



JOHN M. BRUDIN

6/1/2026

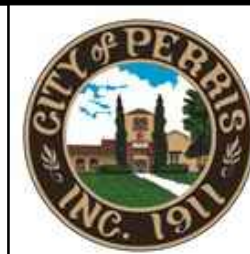
SEAL



APPROVED BY:

DATE: 6/9/26

J. Pourkazemi
CITY ENGINEER



CITY OF PERRIS
ENGINEERING DEPARTMENT

24 S. D. ST. SUITE 100
PERRIS CA 92570
951-956-2120

SCALE: AS SHOWN
DATE:

BENCHMARK:
SEE ON SHEET 1

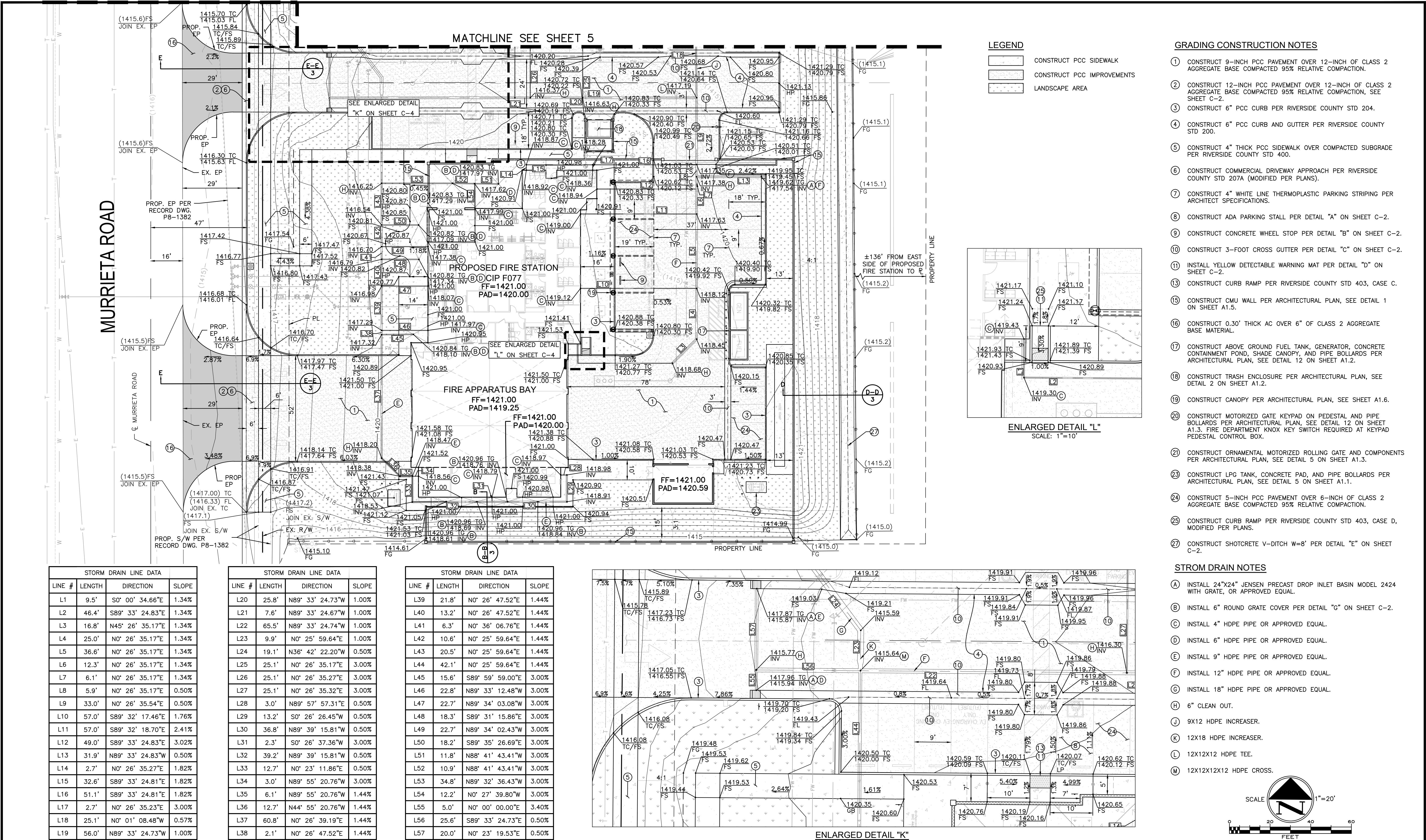
CITY OF PERRIS, CALIFORNIA
SOUTH PERRIS FIRE STATION
CIP F077
DETAILS

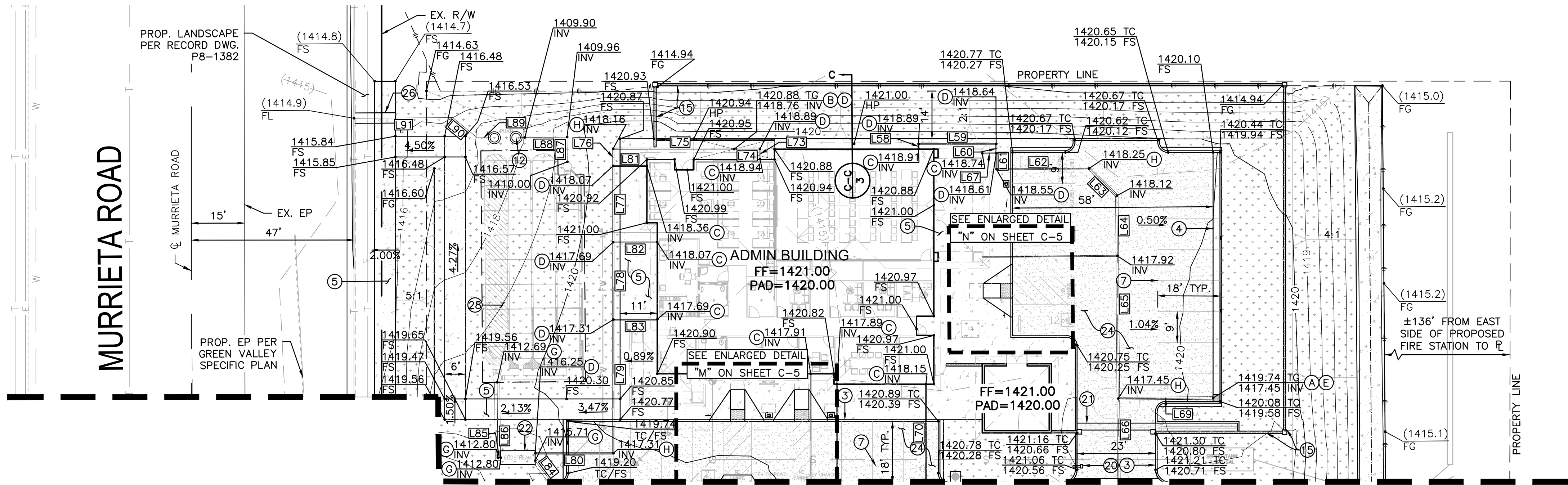
FOR: CITY OF PERRIS

W.O.

SHEET NO.

C-2
OF 9 SHEETS
FILE NO.





MATCHLINE SEE SHEET 4

LEGEND

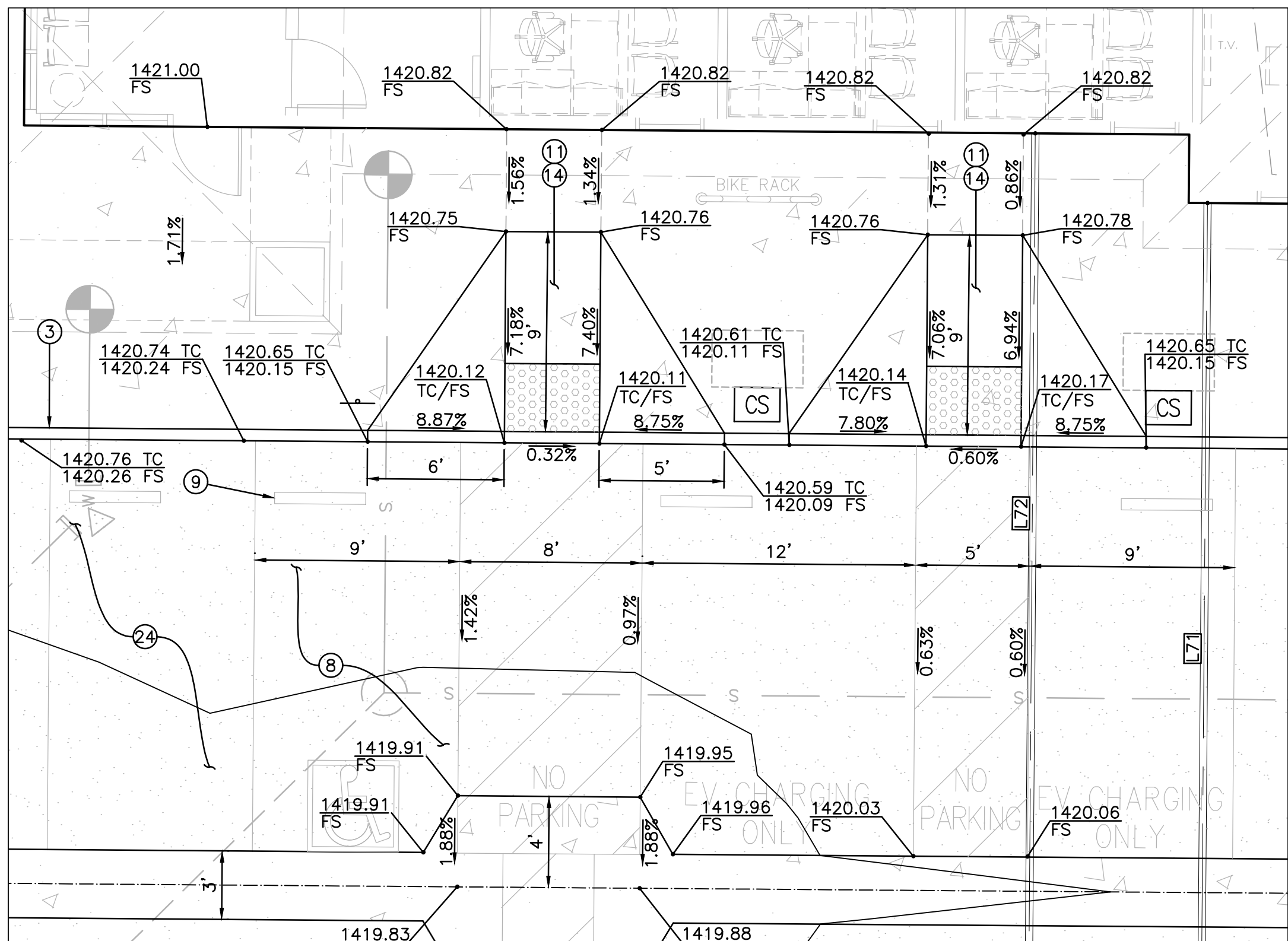
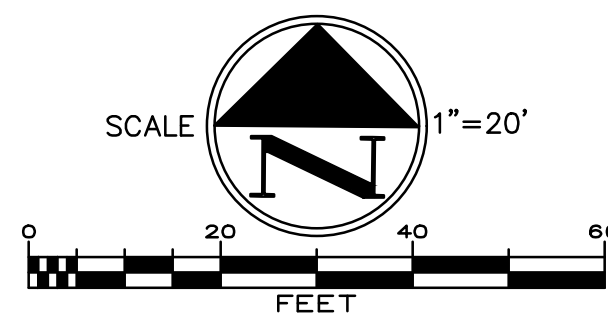
- CONSTRUCT PCC SIDEWALK
- CONSTRUCT PCC IMPROVEMENTS
- LANDSCAPE AREA

GRADING CONSTRUCTION NOTES

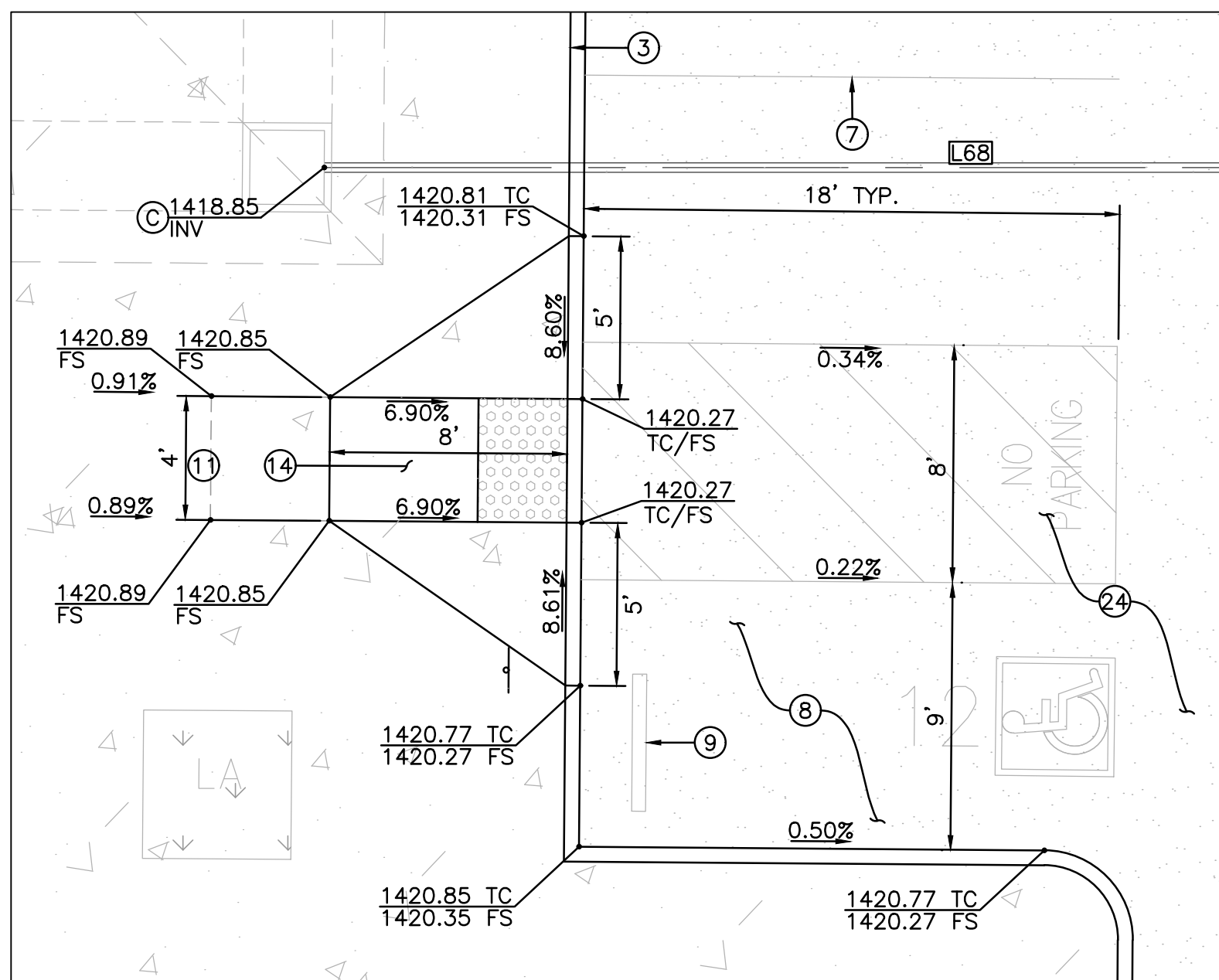
- CONSTRUCT 9-INCH PCC PAVEMENT OVER 12-INCH OF CLASS 2 AGGREGATE BASE COMPACTED 95% RELATIVE COMPACTION.
- CONSTRUCT 12-INCH PCC PAVEMENT OVER 12-INCH OF CLASS 2 AGGREGATE BASE COMPACTED 95% RELATIVE COMPACTION, SEE SHEET C-2.
- CONSTRUCT 6" PCC CURB PER RIVERSIDE COUNTY STD 204.
- CONSTRUCT 6" PCC CURB AND GUTTER PER RIVERSIDE COUNTY STD 200.
- CONSTRUCT 4" THICK PCC SIDEWALK OVER COMPACTED SUBGRADE PER RIVERSIDE COUNTY STD 400.
- CONSTRUCT COMMERCIAL DRIVEWAY APPROACH PER RIVERSIDE COUNTY STD 207A (MODIFIED PER PLANS).
- CONSTRUCT 4" WHITE LINE THERMOPLASTIC PARKING STRIPING PER ARCHITECT SPECIFICATIONS.
- CONSTRUCT ADA PARKING STALL PER DETAIL "A" ON SHEET C-2.
- CONSTRUCT CONCRETE WHEEL STOP PER DETAIL "B" ON SHEET C-2.
- CONSTRUCT 3-FOOT CROSS GUTTER PER DETAIL "C" ON SHEET C-2.
- INSTALL YELLOW DETECTABLE WARNING MAT PER DETAIL "D" ON SHEET C-2.
- INSTALL PSI PACIFIC SOUTHWEST PUMP SYSTEM PER DETAIL ON SHEET C-3, OR APPROVED EQUAL.
- CONSTRUCT CURB RAMP PER RIVERSIDE COUNTY STD 403, CASE C.
- CONSTRUCT CURB RAMP PER RIVERSIDE COUNTY STD 403, CASE A.
- CONSTRUCT CMU WALL PER ARCHITECTURAL PLAN, SEE DETAIL 1 ON SHEET A1.5.
- CONSTRUCT 0.30' THICK AC OVER 6" OF CLASS 2 AGGREGATE BASE MATERIAL.
- CONSTRUCT ABOVE GROUND FUEL TANK, GENERATOR, CONCRETE CONTAINMENT POND, SHADE CANOPY, AND PIPE BOLLARDS PER ARCHITECTURAL PLAN, SEE DETAIL 12 ON SHEET A1.2.
- CONSTRUCT TRASH ENCLOSURE PER ARCHITECTURAL PLAN, SEE DETAIL 2 ON SHEET A1.2.
- CONSTRUCT CANOPY PER ARCHITECTURAL PLAN, SEE SHEET A1.6.
- CONSTRUCT MOTORIZED GATE KEYPAD ON PEDESTAL AND PIPE BOLLARDS PER ARCHITECTURAL PLAN, SEE DETAIL 12 ON SHEET A1.3. FIRE DEPARTMENT KNOX KEY SWITCH REQUIRED AT KEYPAD PEDESTAL CONTROL BOX.
- CONSTRUCT ORNAMENTAL MOTORIZED ROLLING GATE AND COMPONENTS PER ARCHITECTURAL PLAN, SEE DETAIL 5 ON SHEET A1.3.
- INSTALL 4'X12' ES48E ECOSTREAM BIOFILTER SOLID LID PER DETAIL ON SHEET C-2 AND WQMP REPORT, OR APPROVED EQUAL.
- CONSTRUCT LPG TANK, CONCRETE PAD, AND PIPE BOLLARDS PER ARCHITECTURAL PLAN, SEE DETAIL 5 ON SHEET A1.1.
- CONSTRUCT 5-INCH PCC PAVEMENT OVER 6-INCH OF CLASS 2 AGGREGATE BASE COMPACTED 95% RELATIVE COMPACTION.
- CONSTRUCT UNDER SIDEWALK DRAIN PER RIVERSIDE COUNTY STD 309. W=3'.
- CONSTRUCT SHOTCRETE V-DITCH W=8' PER DETAIL "E" ON SHEET C-2.
- INSTALL ADS MC-3500 STORMTECH CHAMBER PER PLANS AND SEPARATE ADS CHAMBERS DESIGN DOCUMENTS PER DETAIL ON SHEET C-3 AND WQMP REPORT, OR APPROVED EQUAL.

STROM DRAIN NOTES

- INSTALL 24"X24" JENSEN PRECAST DROP INLET BASIN MODEL 2424 WITH GRATE, OR APPROVED EQUAL.
- INSTALL 6" ROUND GRATE COVER PER DETAIL "G" ON SHEET C-2.
- INSTALL 4" HDPE PIPE OR APPROVED EQUAL.
- INSTALL 6" HDPE PIPE OR APPROVED EQUAL.
- INSTALL 9" HDPE PIPE OR APPROVED EQUAL.
- INSTALL 12" HDPE PIPE OR APPROVED EQUAL.
- INSTALL 18" HDPE PIPE OR APPROVED EQUAL.
- 6" CLEAN OUT.



ENLARGED DETAIL "M"
SCALE: 1"=5'



ENLARGED DETAIL "N"
SCALE: 1"=5'

STORM DRAIN LINE DATA			
LINE #	LENGTH	DIRECTION	SLOPE
L58	1.5'	N0° 26' 35.23"E	1.14%
L59	22.5'	S89° 33' 24.77"E	1.14%
L60	2.7'	S0° 00' 00.00"E	1.14%
L61	4.6'	S0° 00' 00.00"E	1.14%
L62	26.8'	N90° 00' 00.00"E	1.14%
L63	11.3'	S45° 00' 00.00"E	1.14%
L64	17.4'	S0° 02' 23.22"W	1.14%
L65	41.3'	S0° 02' 23.22"W	1.14%
L66	24.1'	S0° 01' 08.48"E	0.57%
L67	4.1'	N90° 00' 00.00"E	3.21%
L68	39.1'	N90° 00' 00.00"E	2.37%
L69	27.4'	S89° 55' 08.98"E	0.50%
L70	28.2'	N0° 26' 36.76"E	3.00%
L71	28.3'	N0° 26' 36.86"E	3.00%
L72	31.2'	N0° 26' 36.75"E	3.00%
L73	3.0'	N0° 00' 00.00"E	1.72%
L74	7.5'	N90° 00' 00.00"W	1.72%

STORM DRAIN LINE DATA			
LINE #	LENGTH	DIRECTION	SLOPE
L75	35.0'	N89° 25' 20.86"W	1.72%
L76	5.0'	S0° 26' 35.05"W	1.72%
L77	22.1'	S0° 26' 35.05"W	1.72%
L78	22.4'	S0° 26' 35.05"W	1.72%
L79	38.7'	S0° 26' 35.05"W	1.72%
L80	22.5'	N89° 33' 24.95"W	1.72%
L81	9.7'	N89° 33' 24.95"W	3.00%
L82	12.7'	N89° 33' 24.81"W	3.00%
L83	12.7'	N89° 33' 24.81"W	3.00%
L84	7.6'	S36° 42' 22.20"E	0.50%
L85	0.8'	N90° 00' 00.00"W	0.50%
L86	21.8'	N0° 00' 00.00"E	0.50%
L87	7.2'	N0° 00' 00.00"E	0.50%
L88	13.5'	N90° 00' 00.00"W	0.50%
L89	3.7'	N90° 00' 00.00"W	0.50%
L90	9.2'	N49° 55' 15.87"W	0.50%
L91	28.6'	N89° 59' 34.00"W	0.50%



DIG ALERT

DIAL TOLL FREE
811

AT LEAST TWO DAYS
BEFORE YOU DIG

UNDERGROUND SERVICE ALERT OF SOUTHERN CALIFORNIA

DATE	BY	MARK	REVISIONS	APPR.	DATE
	ENGINEER			CITY	
	DESIGNED BY:		DRAWN BY:	CHECKED BY:	

PREPARED BY:

ERSC
Engineering Resources of Southern California
1861 West Redlands Blvd.
Redlands, CA 92373
P: 909.890.1255

JOHN M. BRUDIN
CIVIL
DATE

6/1/2026

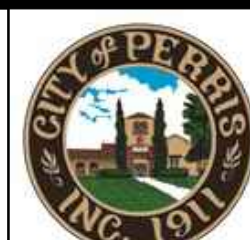
SEAL



APPROVED BY:

DATE: 6/9/26

J. Pourkazemi
CITY ENGINEER



CITY OF PERRIS
ENGINEERING DEPARTMENT

24 S. D ST. SUITE 100
PERRIS CA 92570
951-956-2120

SCALE: AS SHOWN
DATE:

BENCHMARK:
SEE ON SHEET 1

CITY OF PERRIS, CALIFORNIA
SOUTH PERRIS FIRE STATION
CIP F077
PRECISE GRADING PLAN

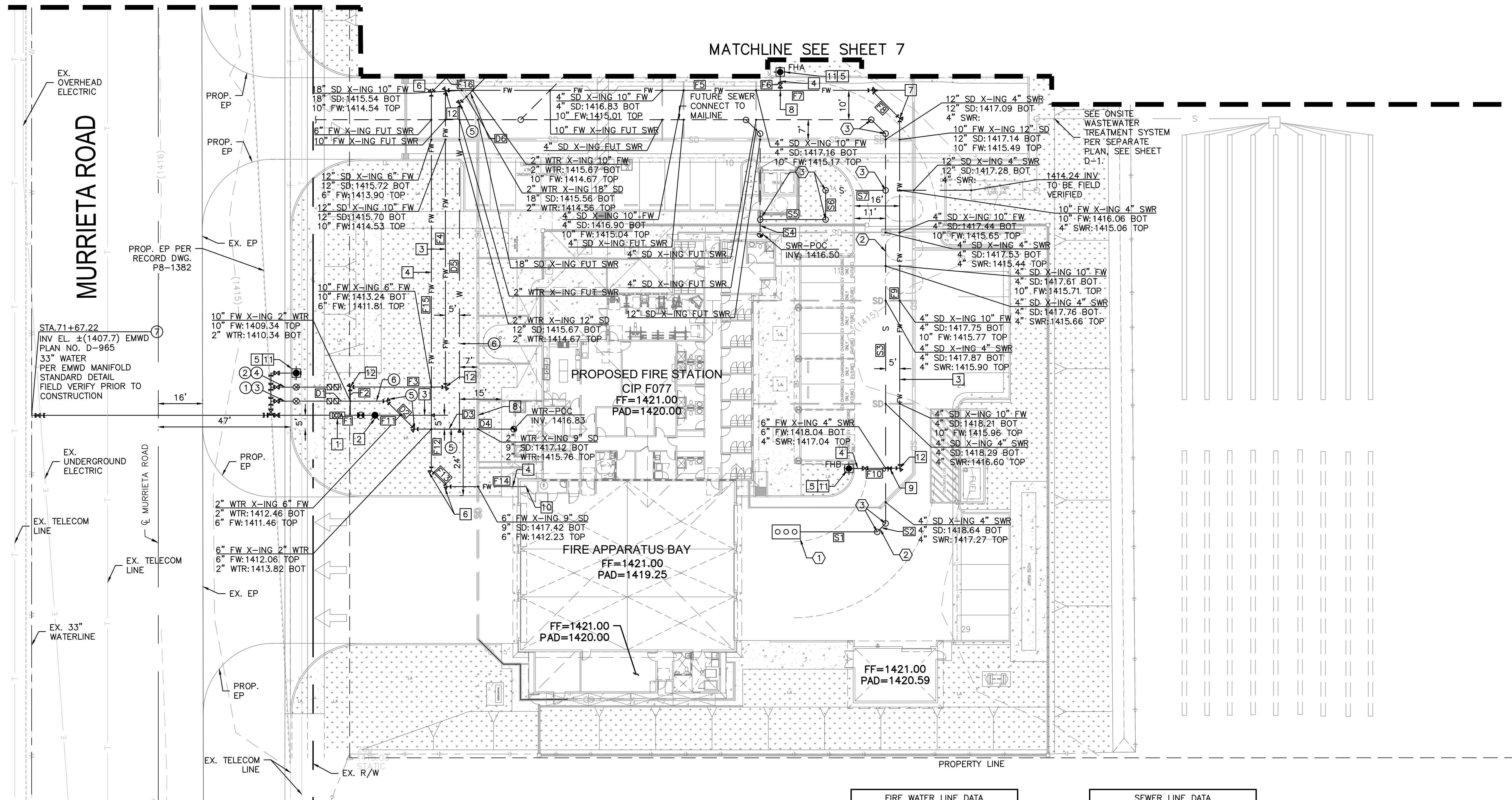
FOR: CITY OF PERRIS

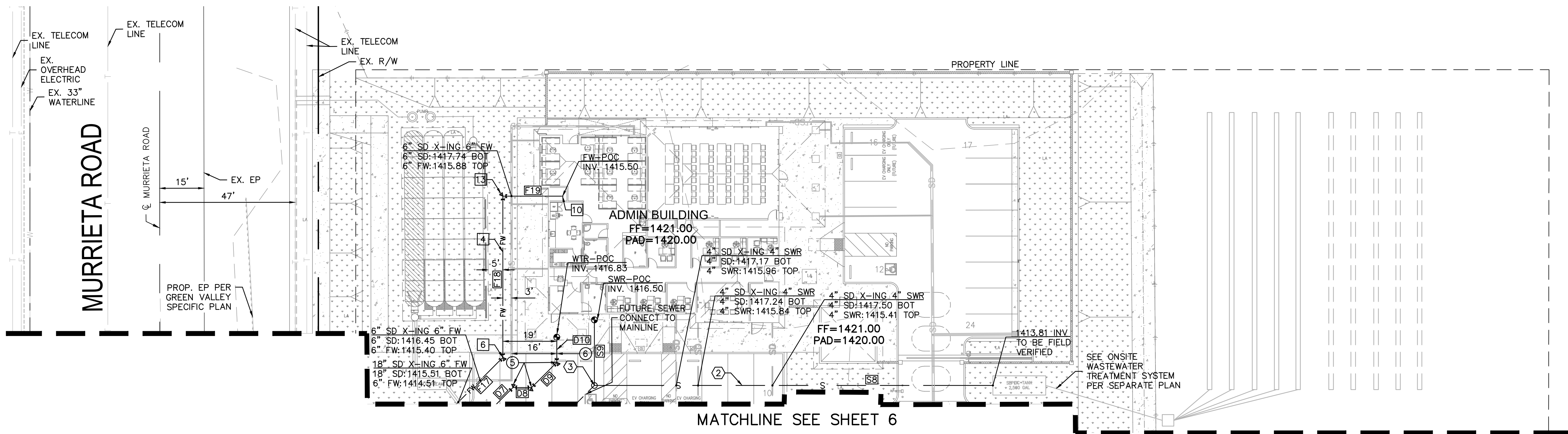
W.O.

SHEET NO.

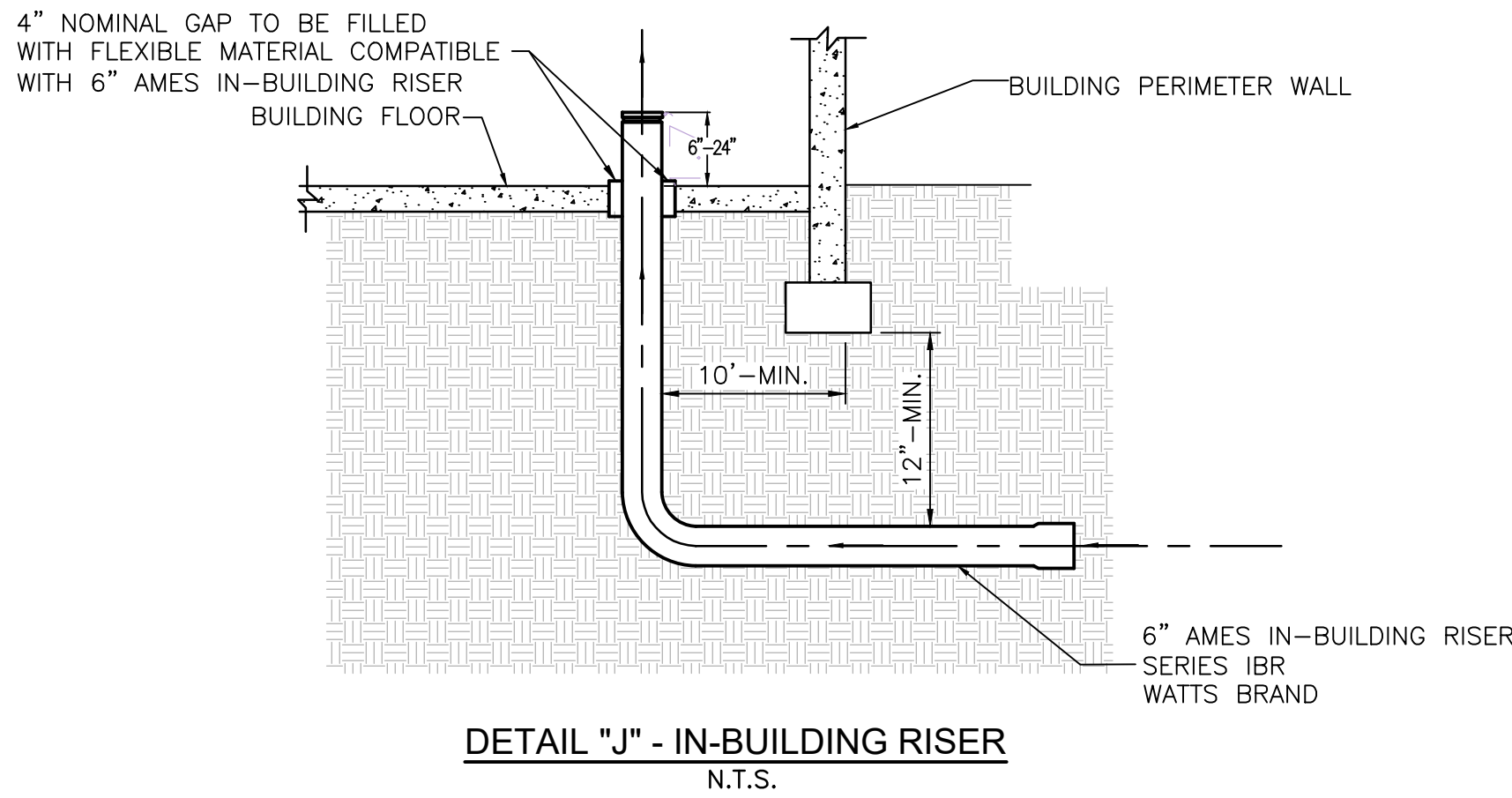
C-5

OF 9 SHEETS
FILE NO.





- UTILITY PLAN NOTES**
- WATER CONSTRUCTION NOTES:**
- ⑤ INSTALL 2-INCH 45° ELBOW.
 - ⑥ INSTALL 2-INCH PVC, SCHEDULE 40 OR APPROVED EQUAL.
- SEWER CONSTRUCTION NOTES:**
- ② INSTALL 4-INCH SCHEDULE 40 PVC OR APPROVED EQUAL.
 - ③ INSTALL 4-INCH SEWER CLEANOUT PER SEPTIC SYSTEM PLAN, SEE SHEET D-1.
- FIRE PROTECTION CONSTRUCTION NOTES:**
- ④ INSTALL 6-INCH PVC C900 OR APPROVED EQUAL.
 - ⑤ INSTALL 6-INCH DIA. FIRE HYDRANT PER EMWD STD DWG B-517.
 - ⑥ INSTALL 6-INCH 45° ELBOW.
 - ⑩ CONNECT FIRE LINE PER DETAIL "J" ON SHEET C-6 AND C-7.
 - ⑪ CONSTRUCT 3'X3 CONCRETE PAD PER EMWD STD DWG B-517.
 - ⑬ INSTALL 6-INCH 90° ELBOW.

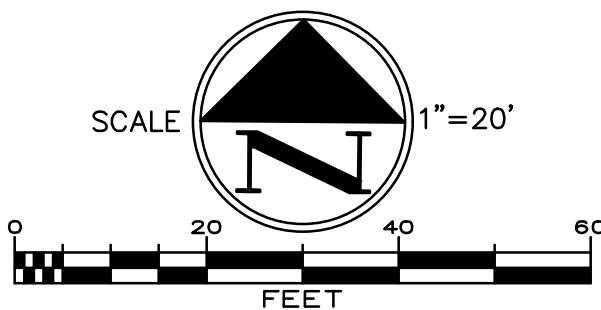


FIRE WATER LINE DATA			
LINE #	LENGTH	DIRECTION	
F6	6.5'	S0° 02' 00.53"W	
F17	22.9'	N45° 23' 23.14"E	
F18	55.9'	N0° 26' 35.05"E	
F19	20.7'	S89° 33' 24.95"E	

SEWER LINE DATA		
LINE #	LENGTH	DIRECTION
S8	138.2'	N89° 33' 11.83"W
S9	23.8'	S0° 26' 48.17"W

DOMESTIC WATER LINE DATA		
LINE #	LENGTH	DIRECTION
D7	8.1'	N45° 26' 35.05"E
D8	6.5'	S89° 33' 24.95"E
D9	12.3'	N45° 26' 35.05"E
D10	8.7'	N0° 26' 35.05"E

- LEGEND**
- TAPPING SLEEVE
 - DOUBLE CHECK DETECTOR ASSEMBLY
 - POST INDICATOR VALVE
 - GATE VALVE
 - FIRE HYDRANT
 - BACKFLOW PREVENTER
 - PROPOSED FIRELINE
 - POINT OF CONNECTION
 - CLEAN OUT
 - F.D.C.
 - WATER METER
 - THRUST BLOCK
 - PROPOSED WATERLINE
 - PROPOSED STORM DRAIN
 - FUTURE SEWER LATERAL



DATE	BY	MARK	REVISIONS	APPR. DATE
	ENGINEER			CITY
	DESIGNED BY:		DRAWN BY:	CHECKED BY:

PREPARED BY:

ERSC
Engineering Resources of Southern California
1861 West Redlands Blvd.
Redlands, CA 92373
P: 909.890.1255

6/1/2026
DATE

JOHN M. BRUDIN



APPROVED BY:

DATE: 6/9/26

J. Pourkazemi
CITY ENGINEER

CITY OF PERRIS
ENGINEERING DEPARTMENT

24 S. D ST. SUITE 100
PERRIS CA 92570
951-956-2120

SCALE: AS SHOWN
DATE:

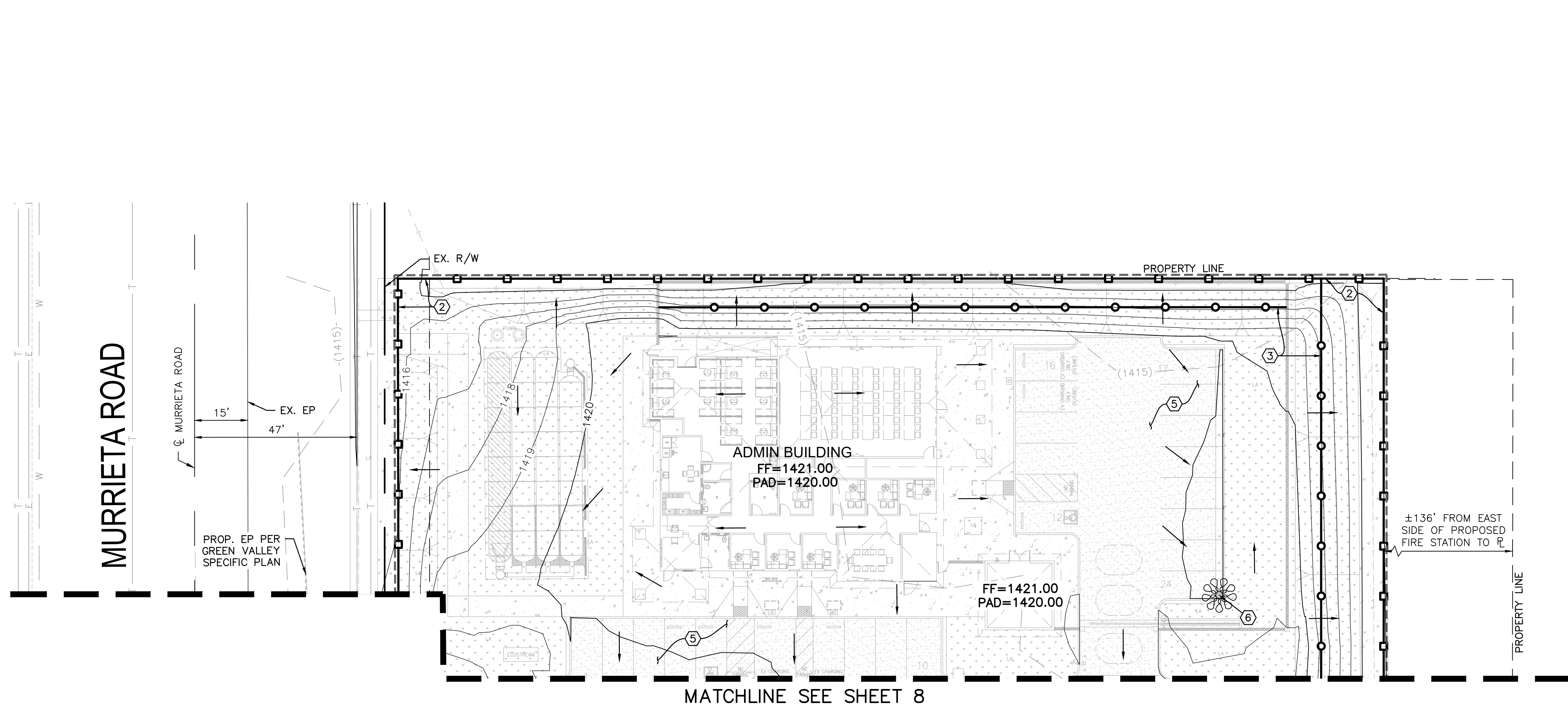
BENCHMARK:
SEE ON SHEET 1

CITY OF PERRIS, CALIFORNIA
SOUTH PERRIS FIRE STATION
CIP F077
UTILITY PLAN

FOR: CITY OF PERRIS

W.O.

SHEET NO.
C-7
OF 9 SHEETS
FILE NO.

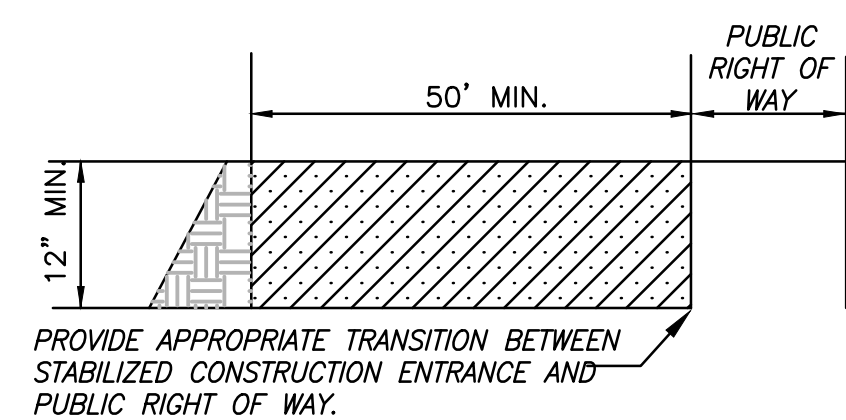


LEGEND

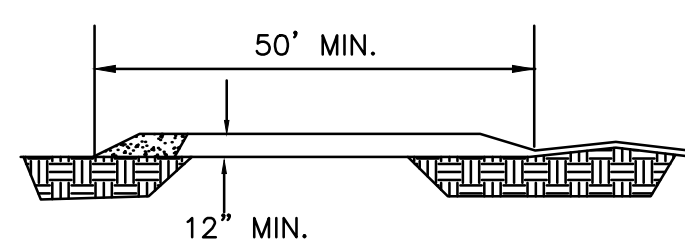
- STABILIZED CONSTRUCTION ENTRANCE
- MATERIAL DELIVERY/STORAGE AREA
- STOCKPILE MANAGEMENT
- SPILL PREVENTION AND CONTROL
- SOLID WASTE MANAGEMENT
- CONCRETE WASTE MANAGEMENT
- GRADING LIMITS
- GRAVEL BAGS
- SILT FENCE
- FIBER ROLLS
- FLOW PATH
- INLET PROTECTION

EROSION CONTROL NOTES

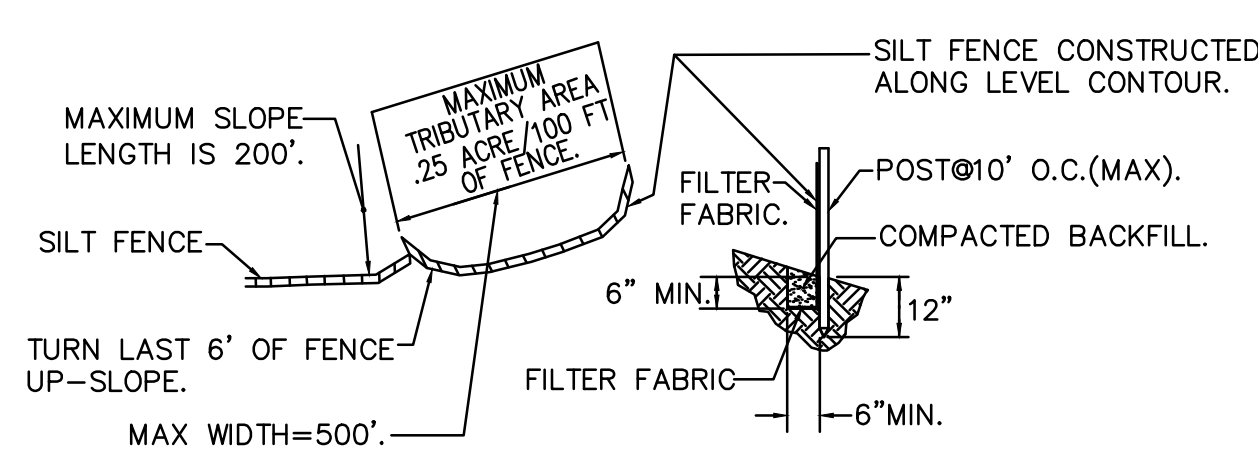
- STABILIZED CONSTRUCTION ENTRANCE (TC-1)
- SILT FENCE (SE-1)
- FIBER ROLLS (SE-5)
- GRAVEL BAG BERM (SE-6)
- STREET SWEEPING AND VACUUMING (SE-7)
- STORM DRAIN INLET PROTECTION (SE-10)
- MATERIAL DELIVERY AND STORAGE (WM-1)
- STOCKPILE MANAGEMENT (WM-3)
- SPILL PREVENTION AND CONTROL (WM-4)
- SOLID WASTE MANAGEMENT (WM-5)
- CONCRETE WASTE MANAGEMENT (WM-8)
- VEHICLE AND EQUIPMENT FUELING (NS-9)
- VEHICLE AND EQUIPMENT MAINTENANCE (NS-10)



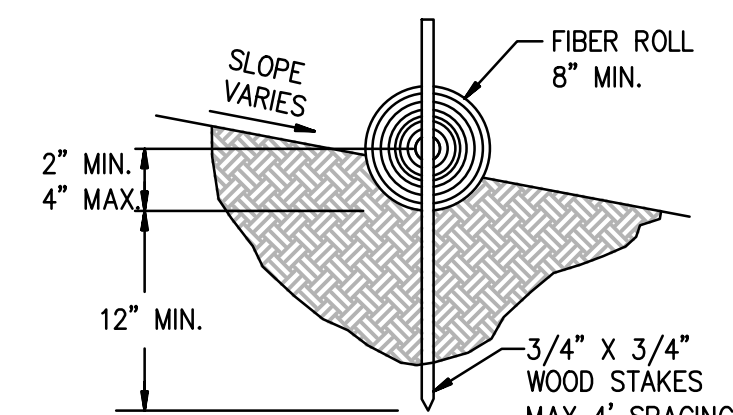
1 STABILIZED CONSTRUCTION ENTRANCE
N.T.S.



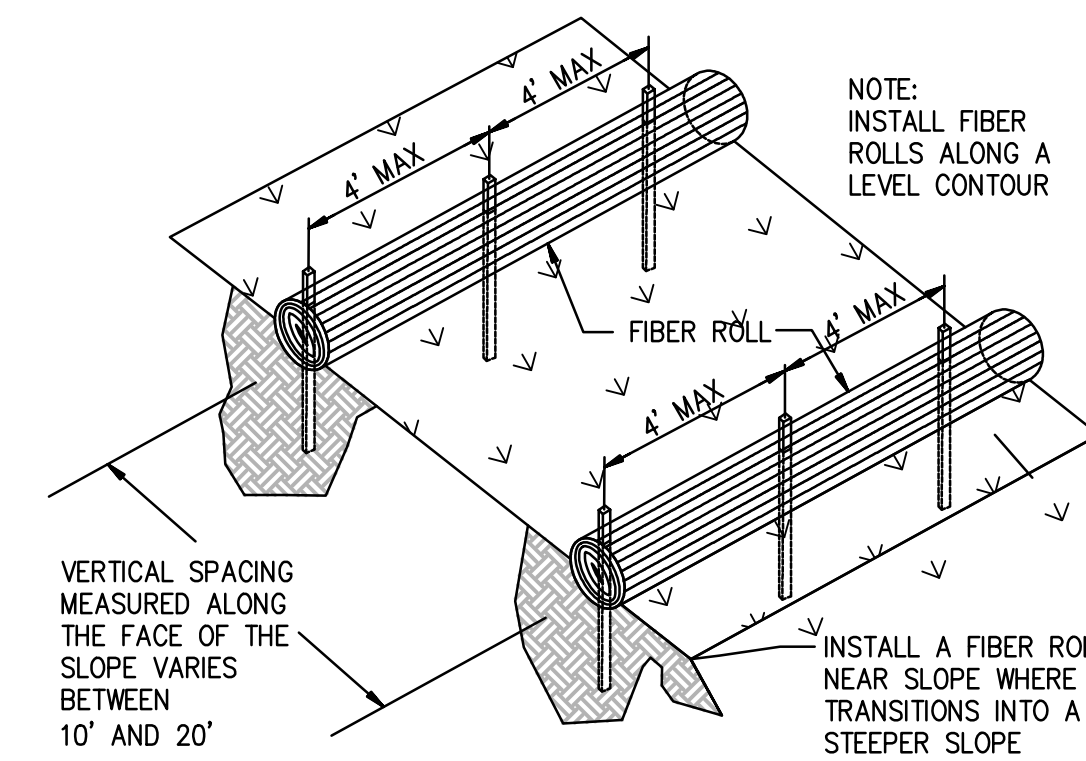
2 SILT FENCE
N.T.S.



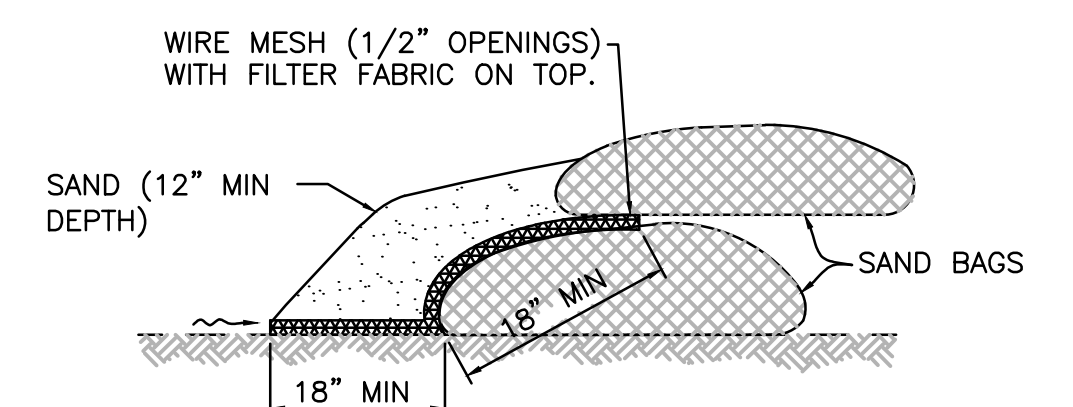
3 FIBER ROLL
N.T.S.



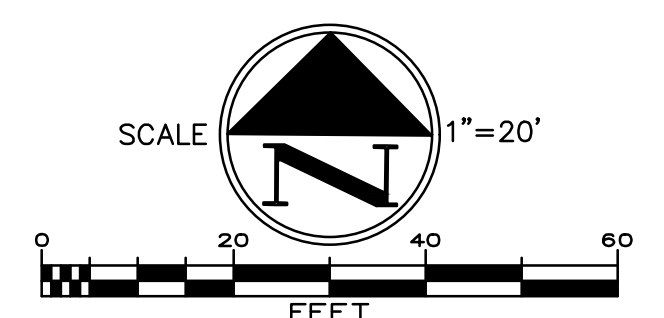
ENTRENCHMENT DETAIL
NOT TO SCALE



TYPICAL FIBER ROLL INSTALLATION
NOT TO SCALE



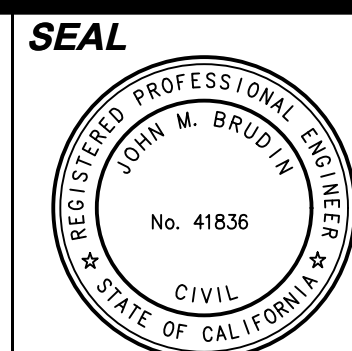
6 SAND BAG BARRIERS
N.T.S.



DATE	BY	MARK	REVISIONS	APPR. DATE
	ENGINEER			CITY
	DESIGNED BY:		DRAWN BY:	CHECKED BY:

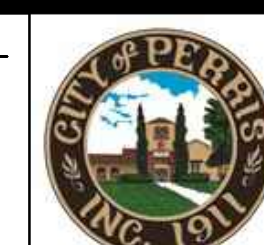
PREPARED BY:
ERSC
Engineering Resources of Southern California
1861 West Redlands Blvd.
Redlands, CA 92373
P: 909.890.1255

6/1/2026
JOHN M. BRUDIN
DATE



APPROVED BY: DATE: 6/9/26

J. Pourkazemi
CITY ENGINEER



CITY OF PERRIS
ENGINEERING DEPARTMENT

24 S. D ST. SUITE 100
PERRIS CA 92570
951-956-2120

SCALE: AS SHOWN
DATE:

BENCHMARK:
SEE ON SHEET 1

CITY OF PERRIS, CALIFORNIA
SOUTH PERRIS FIRE STATION
CIP F077
EROSION CONTROL PLAN

FOR: CITY OF PERRIS

W.O.

SHEET NO.
C-9
OF 9 SHEETS
FILE NO.